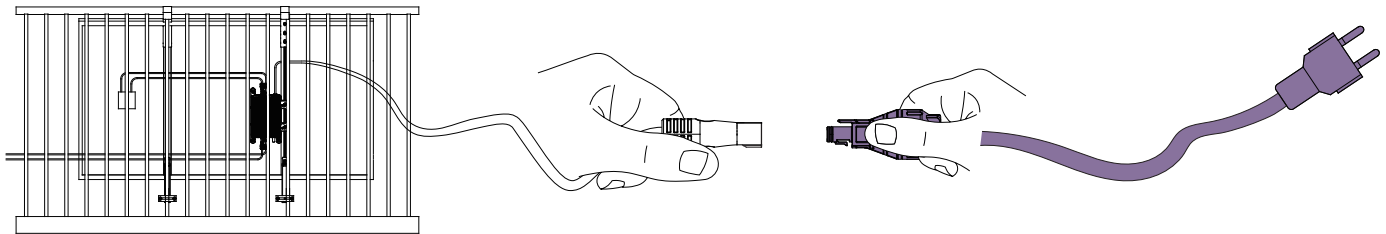


Read manual first
To ensure reliability and warranty compliance, follow the installation instructions in this manual. You can access the current warranty conditions at www.vaysunic.com.

Single-Microinverter System (work with Plug and Play Cable)

Connect the Plug and Play Cable to the microinverter. Listen for a click as they engage.

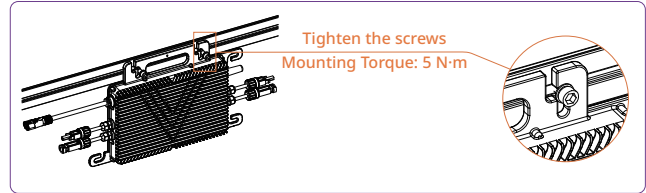
Using Plug and Play Cable: VaySunic offers various cable lengths including 5m. If you require a different length, contact VaySunic GmbH.



Install the Microinverter

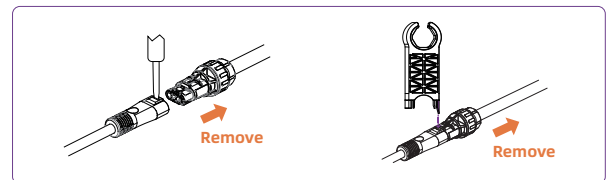
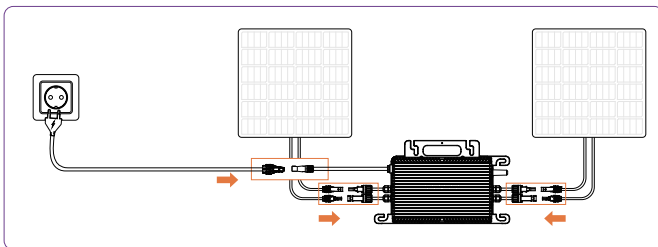
Installation:

- The installation and DC connection of the microinverter must be set under the PV module to avoid direct sunlight, rain exposure, snow accumulation, ultraviolet radiation and other conditions.
- Leave a minimum of 2cm of space around the microinverter enclosure to ensure ventilation and heat dissipation.
- The label side of the microinverter should be facing the panel.
- Mounting the M8 screw, torque is 5 N·m. Do not over torque.



Connect PV Modules

Connect the PV modules DC cables(MC4) to the DC input of the microinverter.



Notice: To remove the connectors or end cap, you must use the disconnect tool or screwdriver.

AP Password Troubleshooting

For Microinverter System

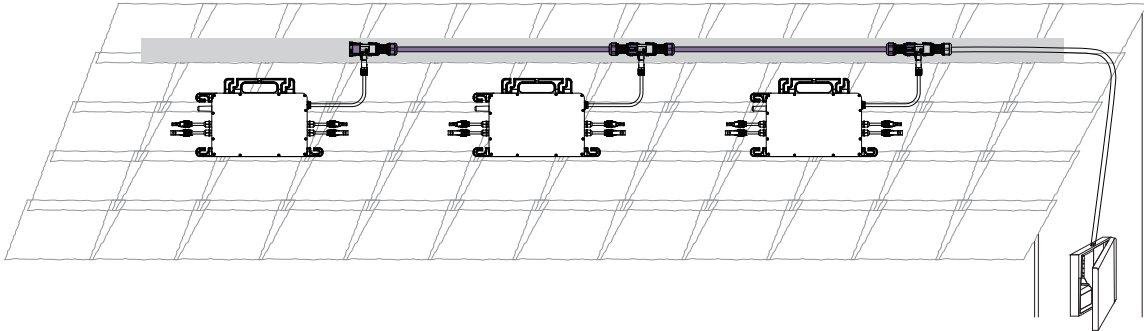
If the WIFI password is entered incorrectly when connecting to the microinverter on the APP, and the microinverter cannot be found, the following methods can be used to reset it.

If you forget the microinverter's password after resetting it, you can restore the initial password using the following method.

1. Confirm normal grid connection status.
2. Disconnect grid voltage for 5-10s.
3. Reconnect grid voltage and wait for 5-10s.
4. Disconnect grid voltage for 5-10s.
5. Connect the plug and ensure stable grid voltage for at least 5s.

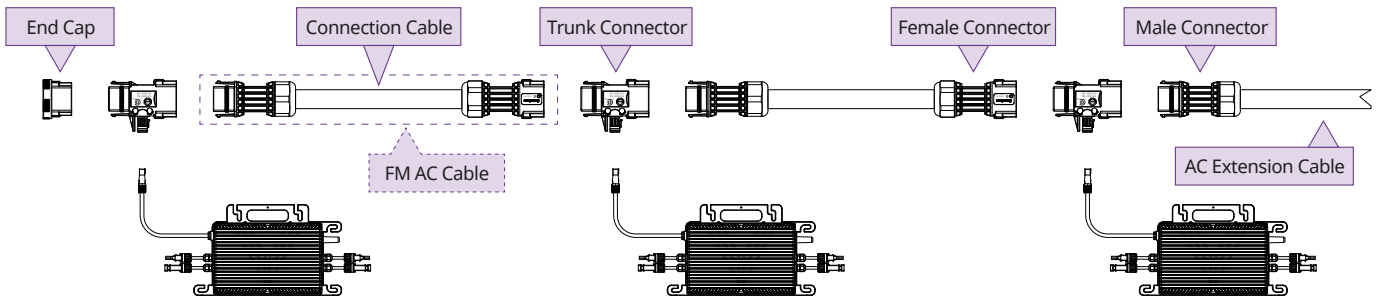
Multi-Microinverter System

In a multi-microinverter system, the main objective of AC side connections is to link the AC output lines of the microinverter systems.



The AC output line consists of five main components: End Cap, Trunk Connector, Female Connector, Male Connector and Connection Cable.

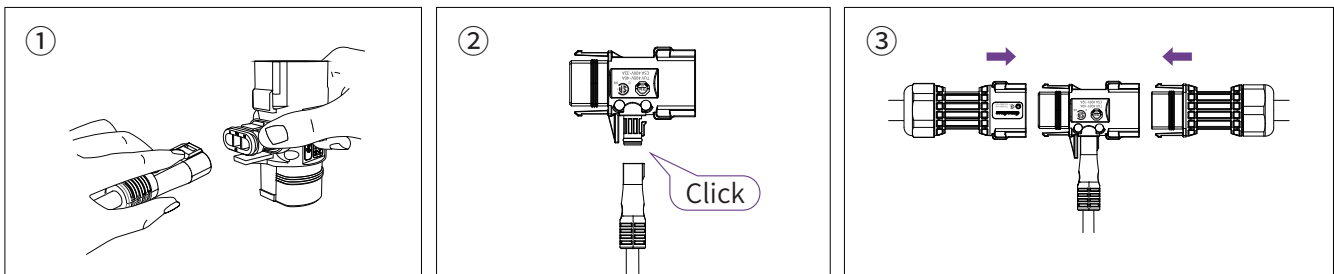
This component channels power from the microinverter to the distribution box.



* Using Plug and Play Cable: VaySunic offers various FM AC Cable lengths including 2.2m. If you require a different length, contact VaySunic GmbH.

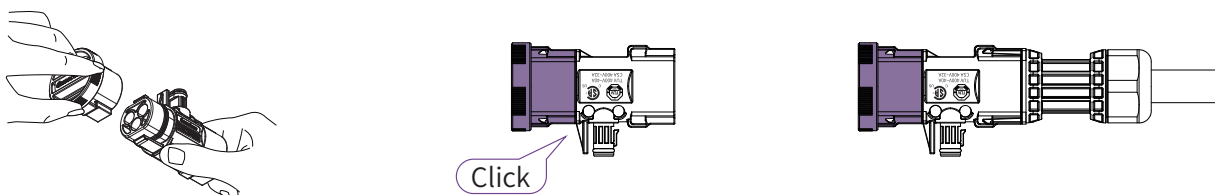
Step 1 Connect the Trunk Connector

Connect the Trunk Connector to the microinverter and listen for a click to ensure secure engagement.



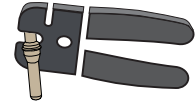
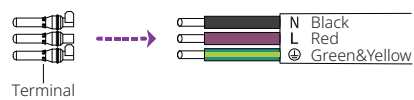
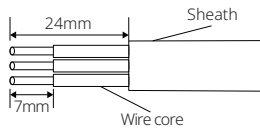
Step 2 Use the end cap

Cover the unused port on the trunk connector (located at the end of the AC Trunk) with a sealing end cap. Listen for a click to confirm the end cap is securely engaged.

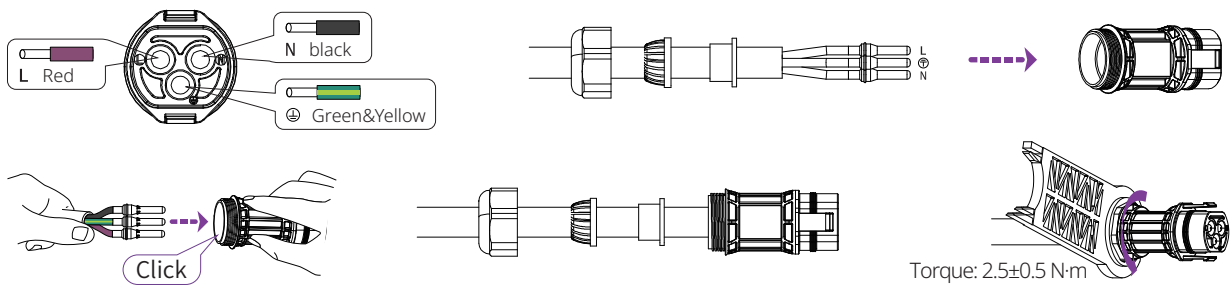


Step 3 Use the male connector

- a. Strip off 24 mm of the outer jacket using a wire stripper. Then, strip the insulation with the wire stripper, exposing 7 mm of the conductor.

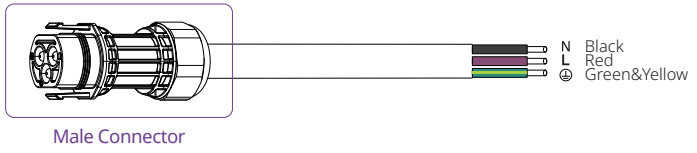
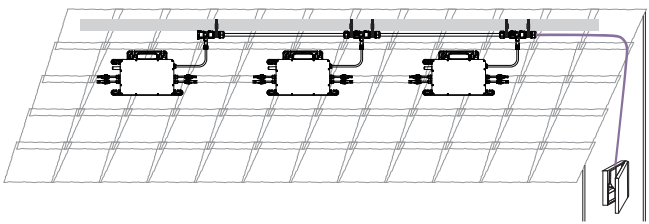


b. Insert the L, N, and PE wires into the connector body following the labeled instructions for proper alignment.



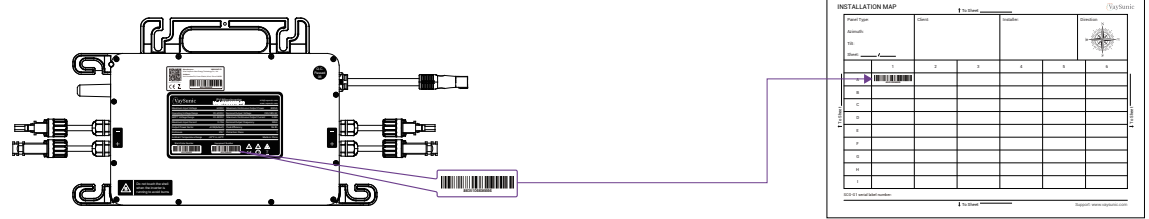
Step 4 Connect to the Distribution Box

Connect the other end of the AC End Cable to the distribution box.



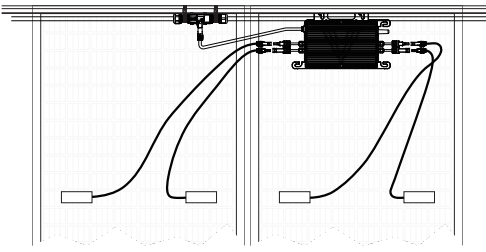
Create an Installation Map

Peel the removable serial number label from each microinverter.
 Affix the serial number label to the respective location on the installation map* (please refer to the appendix).
 * Download: www.vaysonic.com



Connect PV Modules

Connect the PV modules DC cables(MC4) to the DC input of the microinverter.
 Mount the PV modules above the microinverter.



Note:
 1. Make sure that the AC Trunk Connectors are kept away from any drainage channels.
 2. In case you need to remove the microinverter AC cable from AC Trunk Connector, insert the AC Trunk Port Disconnect Tool into the side of AC Sub Connector to complete the removal.

WIFI Information

- Frequency range:** 2.412GHz-2.484MHz
- Transmission power:**
 - 802.11b: 20.5dBm (@1Mbps)
 - 802.11b: 20.5dBm (@11Mbps)
 - 802.11g: 20.0dBm (@6Mbps)
 - 802.11g: 18.0dBm (@54Mbps)
 - 802.11n: 19.0dBm (@HT20, MCS0)
 - 802.11n: 17.5dBm (@HT20, MCS7)
 - 802.11n: 18.5dBm (@HT40, MCS0)
 - 802.11n: 17.0dBm (@HT40, MCS7)



1.

Please download the "VaySonic Cloud" from the App Store / Google Play .
 For the Sub-1G version of the microinverter, network configuration requires connecting to the SCG. Please refer to the SCG-G1 Quick Installation Guide to complete the setup.



2.

* Must connect the PV modules DC cables to the DC input of the microinverter.
 Wait for one minute for the communication module to activate.

